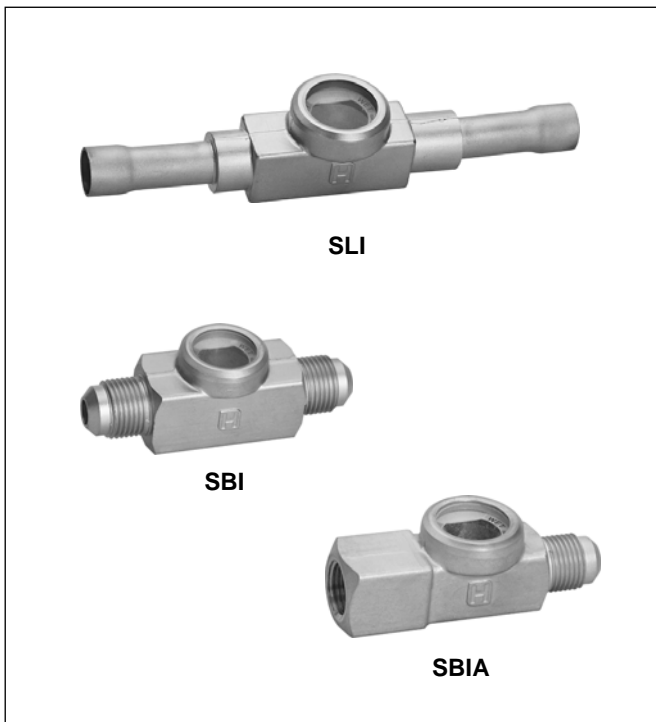


## Series SLI/SBI SIGHT GLASSES WITH MOISTURE INDICATOR

### PRODUCT DATA



### Features

- Large display area
- Moisture indicator
- Low pressure loss
- SLI with solder connections on both sides
- SBI with flare connections on both sides
- SBIA with flare connections, female thread x male thread
- Refrigerants: all CFC, HCFC, HFC, not for R12, R502 and ammonia

### Specifications

<b>Moisture indicator range</b>	see table on page 2
<b>Max. ambient temperature TS</b>	80 °C
<b>Diameter display area</b>	22.5 mm

Type	Maximum pressure PS	Maximum test pressure PF
SLI 6; SLI 1/4 SLI 10; SLI 3/8 SLI 12; SLI 1/2 SLI 15 SLI 16 (5/8)	47 bar(a)	51,7 bar(a)
SLI 18; SLI 3/4 SLI 22 (7/8) SBI SBIA	36 bar(a)	39,6 bar(a)
SLI 28; SLI 1 1/8	35 bar(a)	38,5 bar(a)

### Application

Sight glasses series SLI/SBI/SBIA show the condition of the refrigerant flowing through the lines in the refrigerating plant, for example it is possible to see if the refrigerant in the liquid line is free of bubbles.

The moisture indicator shows the moisture content in the refrigerant.

### Materials

<b>Housing</b>	brass
<b>Display area</b>	pressure resistant glass, indicator paper
<b>Connection tubes</b>	Solder: copper Flare: brass

## Moisture Indicator

The colour of the indicator is a measure for the moisture load of the refrigerant inside the plant.

The range of indication depends on the refrigerant:

Refrigerant	Indication Range		
	dry (green)	Transition	wet (yellow)
R22	< 30 ppm	30 – 150 ppm	> 150 ppm
R134a	< 60 ppm	60 – 100 ppm	> 100 ppm
R404A	< 20 ppm	20 – 100 ppm	> 100 ppm
R407C	< 20 ppm	20 – 130 ppm	> 130 ppm
R410A	< 40 ppm	40 – 150 ppm	> 150 ppm
R507A	< 20 ppm	20 – 100 ppm	> 100 ppm

Indication temperature: 30 °C

Green colour: Moisture free.

Only a moisture-free refrigerant assures no trouble with the expansion valve coming from humidity.

Transition range:

When the green colour begins to fade, it is an indication that small quantities of moisture are present. It is recommended to change the filter drier.

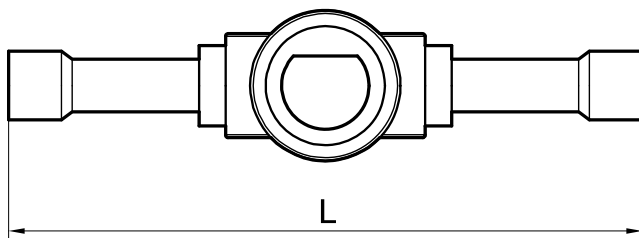
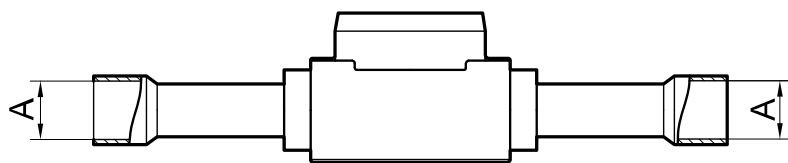
Yellow colour: Wet.

The refrigerant is loaded with moisture higher than the stated values. A change of the filter drier is required.

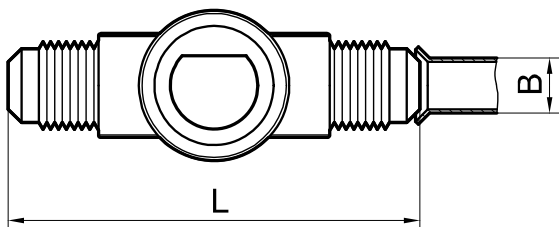
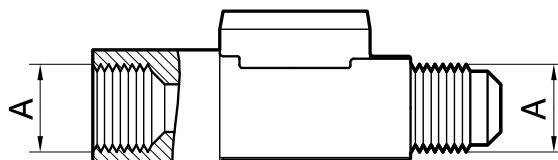
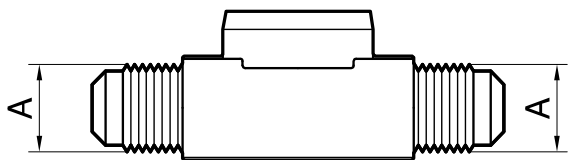
Due to the humidity in the air, the indicator is yellow on delivery. After the installation inside the plant, the indicator will change to green when filling the system with dry refrigerant.

## Dimensions and Weights

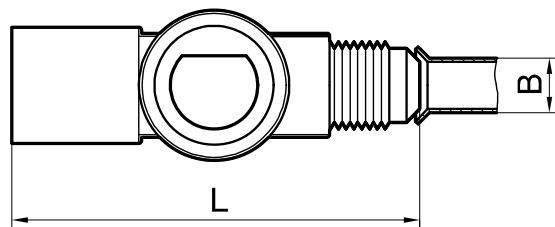
Type	Dimensions			Weight approx. (kg)	
	Connection (A)	Pipe diameter (B)	Length (L)		
SLI 6	6 mm ODF	6 mm	106 mm	0.15	
SLI 10	10 mm ODF	10 mm	119 mm	0.15	
SLI 12	12 mm ODF	12 mm	144 mm	0.20	
SLI 15	15 mm ODF	15 mm	146 mm	0.17	
SLI 16	16 mm; 5/8" ODF	16 mm; 5/8" ODF	146 mm	0,17	
SLI 18	18 mm ODF	18 mm	183 mm	0.22	
SLI 22	22 mm; 7/8" ODF	22 mm; 7/8" ODF	183 mm	0,24	
SLI 28	28 mm ODF	28 mm	188 mm	0.48	
SLI 1/4	1/4" ODF	1/4"	106 mm	0.15	
SLI 3/8	3/8" ODF	3/8"	119 mm	0.15	
SLI 1/2	1/2" ODF	1/2"	144 mm	0.19	
SLI 3/4	3/4" ODF	3/4"	183 mm	0.22	
SLI 1 1/8	1 1/8" ODF	1 1/8"	188 mm	0.48	
SBI 6	7/16" UNF	6 mm	1/4"	70 mm	0.15
SBI 10	5/8" UNF	10 mm	3/8"	76 mm	0.15
SBI 12	3/4" UNF	12 mm	1/2"	88 mm	0.17
SBI 16	7/8" UNF	16 mm	5/8"	98 mm	0.29
SBIA 6	7/16" UNF	6 mm	1/4"	60 mm	0.30
SBIA 10	5/8" UNF	10 mm	3/8"	76 mm	0.15
SBIA 12	3/4" UNF	12 mm	1/2"	74 mm	0.19
SBIA 16	7/8" UNF	16 mm	5/8"	78 mm	0.31



SLI



SBI



SBIA

### Type Code / Order Information

	S	B	I	A		12
Series	┌					
Connection type: B = flare L = solder		┌				
Indicator			┌			
A = Inner and outer connection ( )				┌		
Tube connection size (mm, inch)						┌

**Honeywell**

**Automation and Control Solutions**

Honeywell GmbH  
 Hardhofweg  
 74821 Mosbach/Germany  
 Phone: +49 (0) 62 61 / 81-475  
 Fax: +49 (0) 62 61 / 81-461  
 E-Mail: [cooling.mosbach@honeywell.com](mailto:cooling.mosbach@honeywell.com)  
[www.honeywell-cooling.com](http://www.honeywell-cooling.com)

Manufactured for and on behalf of the  
 Environment and Combustion Controls  
 Division of Honeywell Technologies Sàrl,  
 1180 Rolle, Z. A. La Pièce 16, Switzerland  
 by its authorized representative Honeywell GmbH

KAT-SLI/SBI-002